

E  
DRAWING NUMBER  
S1016/1026  
SIZE  
A  
SCALE:  
NONE  
DATE:  
2-21-85  
APPROVED BY:  
CR  
CHECKED BY:  
TD  
DRAWN BY:  
EMB  
1016/1026  
FIGURE NUMBER

**SMITH® JAY R. SMITH MFG. CO.®**  
MEMBER OF MORRIS GROUP INTERNATIONAL  
POST OFFICE BOX 3237  
MONTGOMERY, ALABAMA 36109-0237 (USA)  
TEL: 334-277-8520 FAX: 334-272-7396 www.jrsmith.com



LOCATION

# RAINTROL® ROOF DRAIN

## ADJUSTABLE "FLOW RATE CONTROL" DESIGN FOR SLOPED ROOF CONSTRUCTION

### WITH ADJUSTABLE TOP

**FUNCTION:** Used to control the flow of rain water off a roof. Trapezoidal weirs limit the flow to the leaders. The adjustable top permits adjustment to roof insulation thickness without disturbing the drain body or any existing or temporary roofing. Large clamping surface holds flashing and roof materials without puncturing.

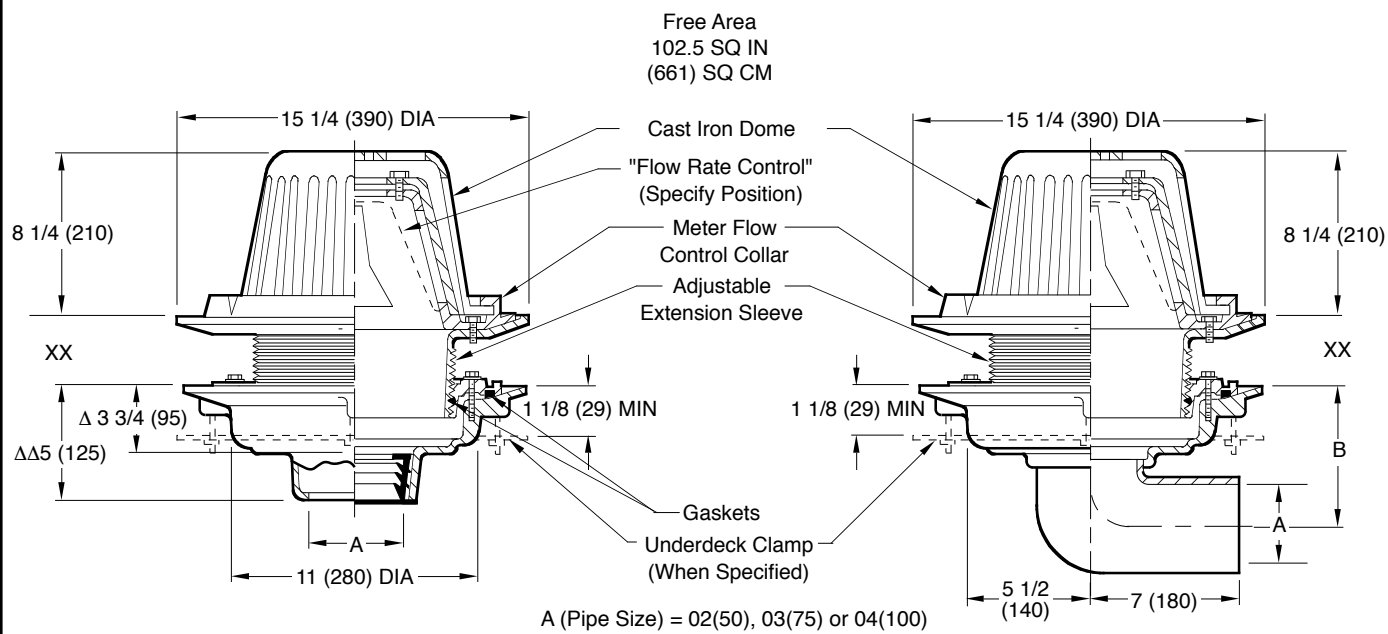


Fig. 1016C ..... CAULK OUTLET  
 Fig. 1016Y..... NO-HUB OUTLET

Fig. 1026S..... SPIGOT OUTLET  
 Fig. 1026T..... THREADED OUTLET

recommended deck opening	
with suffix -R	17 (430) DIA
less suffix -R	14 (355) DIA

XX	MIN	MAX
Low Position	1 1/4 (32)	2 1/2 (64)
High Position	2 1/4 (57)	4 (100)

ALWAYS SPECIFY NUMBER OF WEIR OPENINGS

(-WR1)	(-WR2)	(-WR3)	(-WR4)
--------	--------	--------	--------

\*NOTE:  
(-WR1) 1 WEIR OPENING  
(-WR2) 2 WEIR OPENING  
(-WR3) 3 WEIR OPENING  
(-WR4) 4 WEIR OPENING

A SIZE	02(50)	03(75)	04(100)
B	6(150)	6 1/2(165)	7 (180)

\*This dimension to internal stop of Speedi-Set Gasket  
\*\*Same for Caulk, NO-HUB and Speedi-Set, 3 3/4 (95) for Threaded

**REGULARLY FURNISHED:**  
Duco Cast Iron Body with Adjustable Extension Sleeve, Combined Flashing Clamp and Gravel Stop with Adjustable "Flow Rate Control" Assembly and Dome

- VARIATIONS:**
- Expansion Joint (Specify Fig. 1710)
  - "L" Shaped Underdeck Clamp -CL
  - L Speedi-Set Service Weight 02(50), 03(75) & 04"(100) sizes only
  - LXH Speedi-Set Extra Heavy 02(50), 03(75) & 04"(100) sizes only
  - NO-HUB Adaptor (Fig. 1026 only)
  - Sump Receiver -R
  - Underdeck Clamp -C
  - T Threaded Outlet

- OPTIONAL MATERIALS:**
- Aluminum Dome -AD
  - Galvanized Cast Iron -G
  - Rough Bronze Dome -RBD

**NOTE:** Please contact the factory or your local Representative if more information on selection, sizing and placement of our Raintrol® roof drains is required.

**NOTE:** Dimensions shown in parentheses are in millimeters.

E	4-25-16	Revised Table	TBW	CL	WEIGHT POUNDS	VOLUME CUBIC FEET	FIGURE NUMBER
D	9-10-12	Revised Table	TBW	BW			
C	6-5-06	Revised Dim	TBW	AM	1016/1026		
B	5-15-95	Submittal Update	EMB	BS			
REV.	DATE	DESCRIPTION	BY	CKD. BY			