



# Centerset Lavatory Faucet LFC204

## INSTALLATION INSTRUCTIONS

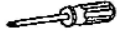
### Tools You Will Need:



Silicone Sealant



Pipe tape



Phillips Screwdriver



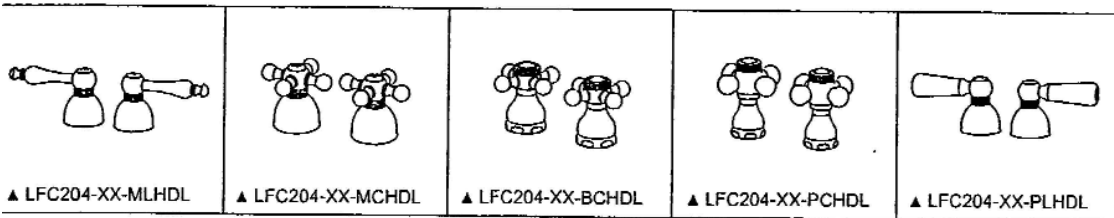
Pliers



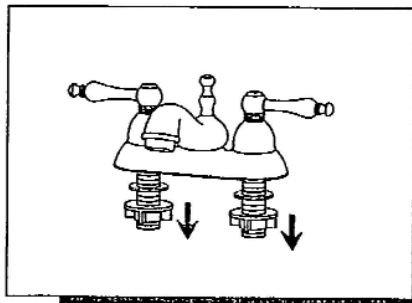
Adjustable wrench



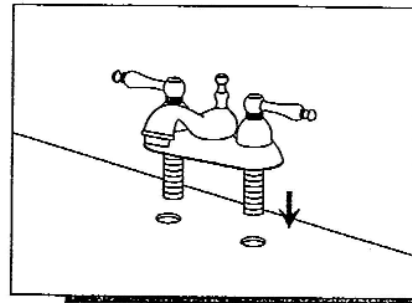
### Available Handle Options



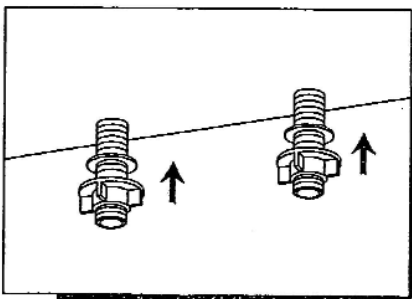
### INSTALLATION STEPS:



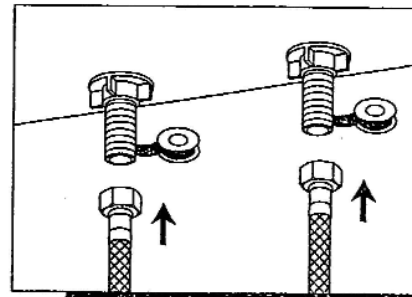
1. Remove the mounting hardware from the faucet.



2. Place silicone sealant beneath the plastic gasket and install faucet through center hole.



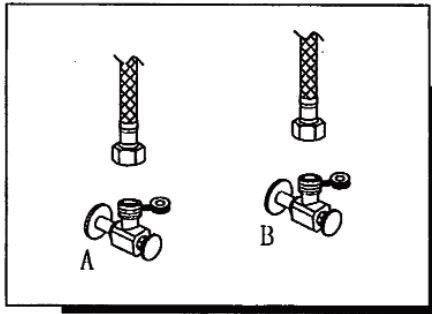
3. Re-assemble the mounting hardware, screw and tighten lock nuts onto faucet.



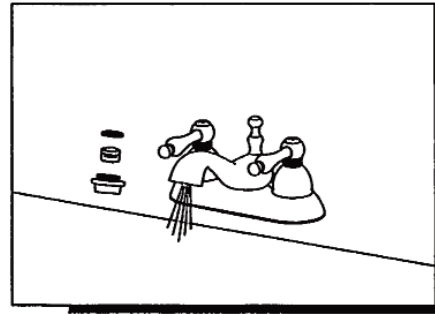
4. Apply pipe tape to threads. Attach water supplylines on end to the faucet and screw onto inlet ports.



# Centerset Lavatory Faucet LFC204

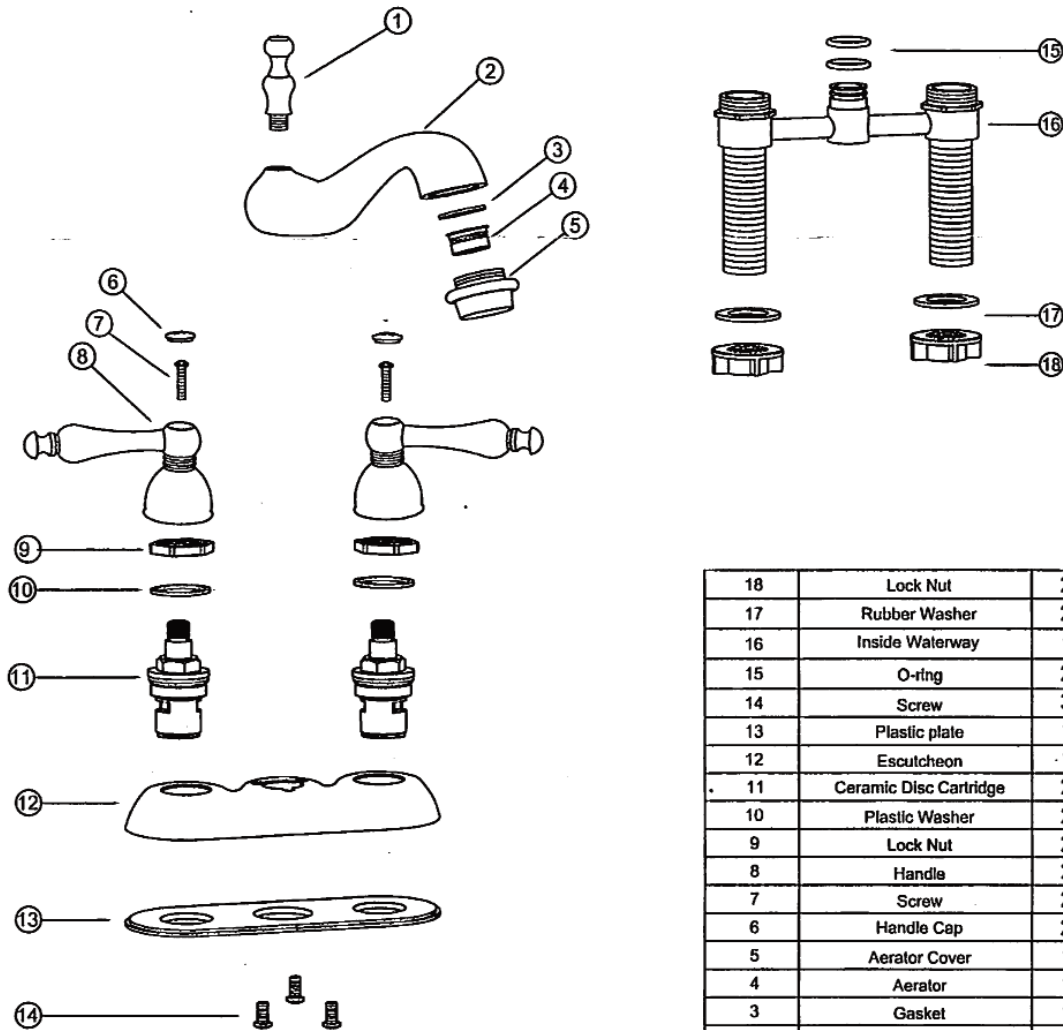


5. Connect to water supply.



6. After installing faucet, remove aerator assembly and open the hot and cold water supplies. Check for leaks. Turn on faucet handle for one minute to flush debris from faucet. Close the handles and re-assemble the aerator.

## Exploded Drawing



No.	Part Description	Quantity
18	Lock Nut	2
17	Rubber Washer	2
16	Inside Waterway	1
15	O-ring	2
14	Screw	3
13	Plastic plate	1
12	Escutcheon	1
11	Ceramic Disc Cartridge	2
10	Plastic Washer	2
9	Lock Nut	2
8	Handle	2
7	Screw	2
6	Handle Cap	2
5	Aerator Cover	1
4	Aerator	1
3	Gasket	1
2	Spout	1
1	Spout Trim Cap	1
No.	Part Description	Quantity