

### Application

Designed to ease the installation of the N-Shape ZURN WILKINS Model 450 and 475 series Backflow Prevention Assemblies. Ideal for retrofitting existing installations, or where space is limited. The integral thrust support between the elbows eliminates the need for additional thrust blocking.



Model FLS



### Standards Compliance

- Certified to NSF/ANSI 372\* by IAPMO R&T  
\*(0.25% MAX. WEIGHTED AVERAGE LEAD CONTENT)

### Materials

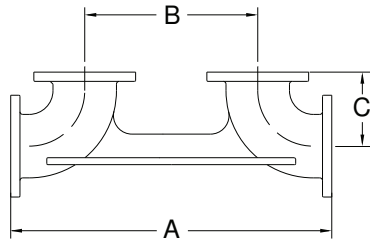
Setter body      Ductile Iron ASTM A 536 Grade 4  
Coatings        FDA Approved fusion epoxy finish

### Features

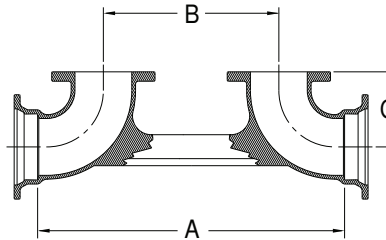
Sizes: 2 1/2", 3", 4", 6", 8", 10"  
Maximum working water pressure      175 PSI  
Maximum working water temperature    140°F  
MJS-Mechanical Joint by Mechanical Joint    AWWA C153-88  
MJFS-Mechanical Joint by Flange            AWWA C153-88  
FLS-Flange by Flange                            ANSI B16.1  
CLASS 125

### Accessories

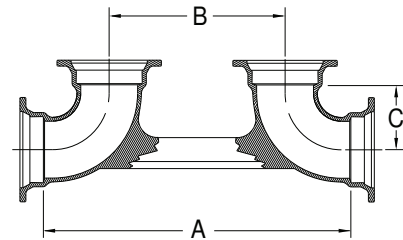
- Flange by grooved adapter (FLA)
- Bolt Kit (BK)



MODEL FLS



MODEL MJFS

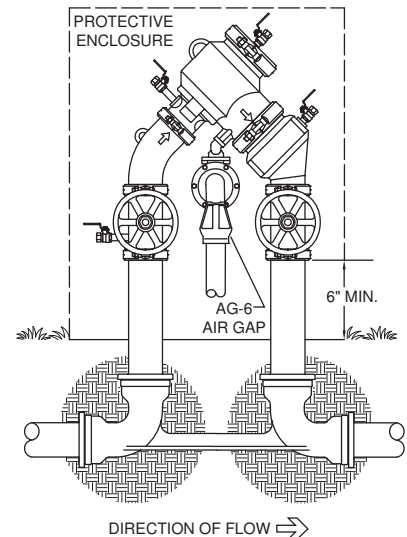


MODEL MJS

### DIMENSIONS & WEIGHTS (do not include pkg.)

MODEL	DIMENSIONS (approximate)							WEIGHT	
	FOR MODEL	A		B		C		lbs.	kg
		in.	mm	in.	mm	in.	mm		
212-FLS	2 1/2" ALL	36	914	26	660	5	127	50	23
3-FLS	3" ALL	38	965	27	686	5 1/2	140	58	26
3-MJFS	3" ALL	35 13/16	910	27	686	5 1/2	140	57	26
3-MJS	3" ALL	35 13/16	910	27	686	4 7/16	113	55	25
4-FLS	4" ALL	31 5/16	795	18 5/16	465	6 1/2	165	82	37
4-MJFS	4" ALL	29 5/16	745	18 5/16	465	6 1/2	165	90	41
4-MJS	4" ALL	29 5/16	745	18 5/16	465	7 7/8	200	96	44
6-FLS	6" ALL	34 3/4	883	18 11/16	475	8	203	166	75
6-MJFS	6" ALL	32 3/4	832	18 11/16	475	8	203	160	73
6-MJS	6" ALL	32 3/4	832	18 11/16	475	7 1/16	179	178	81
8-FLS	8" ALL	47	1194	29	737	9	229	224	102
8-MJFS	8" ALL	44 5/8	1133	29	737	9	229	215	98
8-MJS	8" ALL	44 5/8	1133	29	737	7 13/16	198	194	88
10-FLS	10" ALL	51	1295	29	737	11	279	278	126
10-MJFS	10" ALL	47	1194	29	737	11	279	257	117
10-MJS	10" ALL	47	1194	29	737	9	229	227	103

**MODEL 475 UNDERGROUND OPTIONAL INSTALLATION (WITH MODEL MJS-MECHANICAL JOINT BY MECHANICAL JOINT VALVE SETTER)**



### Specifications

The mechanical joint by flange and mechanical joint by mechanical joint valve setter shall meet AWWA C153-88 and the flange by flange valve setter shall meet ANSI B16.1. The assembly shall be FDA Approved fusion epoxy coated ductile iron (ASTM A536 Grade 4). The setter shall be a ZURN WILKINS Model FLS, MJFS or MJS.