



**Precision Plumbing Products**  
*"Specify with Confidence - Install with Pride"*

**LEAD FREE**

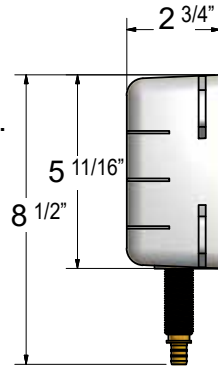
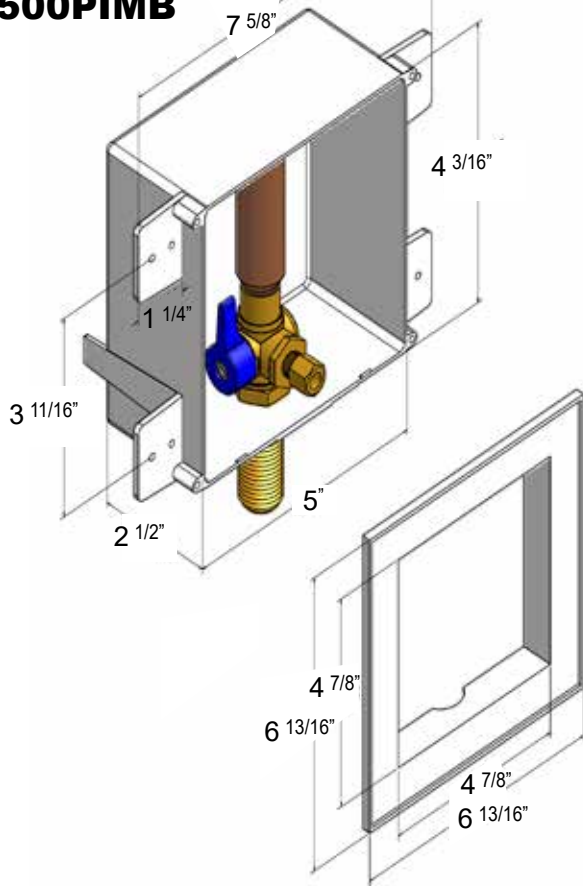
**PLASTIC ICE MAKER BOXES INSTALLATION**

**INSTALLATION:**

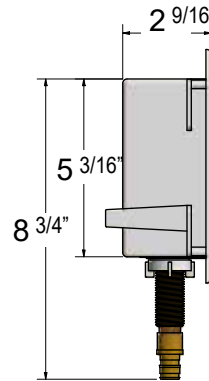
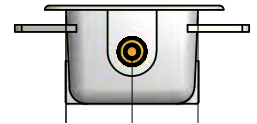
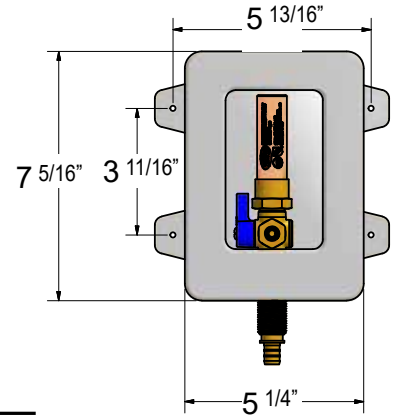
- 1) Position box between studs to desired height.
- 2) Secure box to a backing board or to the front of studs. The front of the box should be flush with the wall material.
- 3) Connect the cold water supply to the valve.
- 4) Install face plate by pushing plate into box until plate is flush against the wall material.

**USE CAUTION WHEN APPLYING HEAT NEAR THE PLASTIC BOX.**

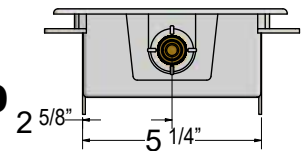
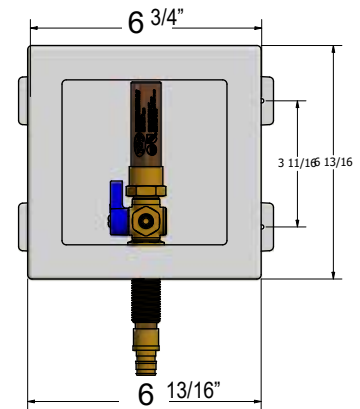
**MM-500PIMB**



**Plastic Ice Maker Box with PEX Fitting  
 MM-500PIMB-PEX**



**Plastic Ice Maker Box with PEX19 Fitting  
 MM-500PIMB-PEX19**



**Precision Plumbing Products**

Division of JL Industries, Inc.  
 802 SE 199th Avenue  
 Portland, Oregon 97233  
 T (503) 256-4010  
 F (503) 253-8165  
 www.pppinc.net

**NSF/ANSI 61  
 Certified**

