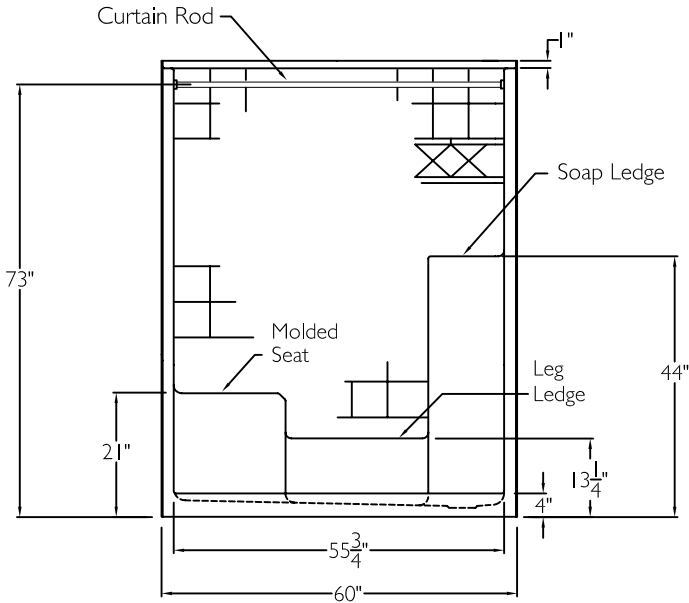


FRONT VIEW



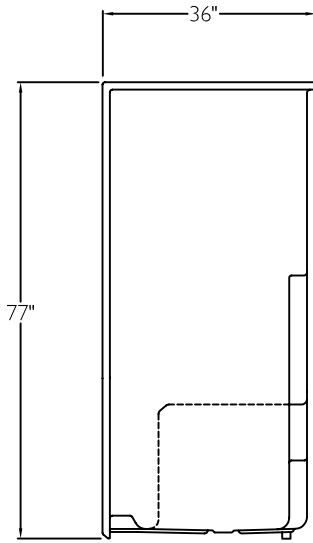
SUBMITTAL

This shower enclosure shall be model SST 6036 SH IS 4.0" left or right. Finished surface shall be of a sanitary grade solid surface exhibiting a minimal thickness of 55 dry mils and a finished cured Barcoal hardness of 80-90 as tested with ASTM D-2583. Unit construction shall be of a molded reinforced fiberglass with a 15% minimum fiberglass content.

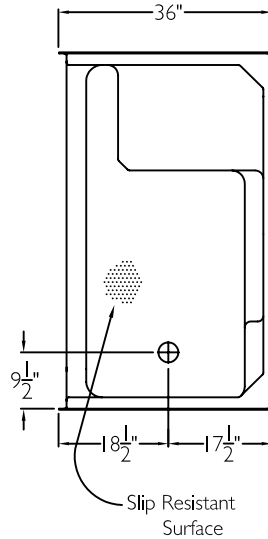
The unit shall have outside dimensions of 60" x 36" x 77". The unit shall meet ANSI Z124.1-2, BOCA, NAHB, UPC, CSA, and shall meet the requirements of the Southern Building Code.

- The enclosure shall be equipped with the following accessories:
- 1) One inch diameter, 18 gauge stainless steel curtain rod with receiver cups,
 - 2) large molded seat,
 - 3) molded soap ledge,
 - 4) molded leg ledge,
 - 5) tile finish,
 - 6) diamond accents,
 - 7) left or right seat,
 - 8) tri cell backing,
 - 8) 4.0" threshold.

SIDE VIEW



TOP VIEW



THIS UNIT FEATURES THE OUTSIDE DIMENSION OF 60" OF OVERALL WIDTH. THIS DOES NOT ALLOW FOR FULL ENCLOSURE OF THE BOLTS AND NUTS USED TO SECURE THE BARS AND SEAT IN PLACE. THE BOLT AND NUT COMBINATION SHOULD NOT PROTRUDE MORE THAN 3/4" ON EITHER SIDE OF THE SHOWER WALLS. THIS MAY REQUIRE THE NEED TO NOTCH STUDS TO ALLOW BOLT CLEARANCE FOR A DRYWALL ENCLOSED FIRE WALL INSTALLATION. ADJUSTMENT OF THE WALL BOARD MAY BE NECESSARY TO PROVIDE CLEARANCE OF THE BOLT(S) WHILE MAINTAINING THE INTEGRITY OF THE DRYWALL ENCLOSED FIRE WALL ENCLOSURE.

Job Name	Approved By	Name	Date	COMFORT DESIGNS		
Project No	Architect			Model No. SST 6036 SH 4.0 MS-I		
Comfort Designs 435 Industrial Road Savannah, TN 38372 tel 800.443.7269 fax 731.925.4290 www.comfortdesignsbathware.com	Engineer			Drawing No. SST 6036 SH 4.0 MS CR		
	Rep			Date Issued. 4-16-12	Drawing Rev.	
	Wholesaler			Material. Solid Surface		
	Comments			Color.		
				Dimensions are in inches. Due to the nature of the materials dimensions may vary ± 1/2"		