

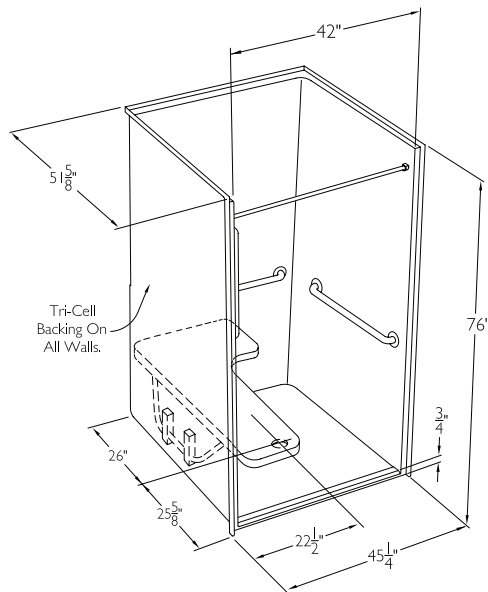
# CD Technical Data Sheet

## COMMERCIAL ACCESSIBLE

### 4248BF

OD 45" x 51.6" x 76"

COMFORT PACKAGE 4248BF-1 shown in drawing



## STANDARD FEATURES

Barrier-free threshold  
Solid Surface finish- 10 year limited warranty or  
Gelcoat finish- 3 year limited warranty  
GripSure textured floor

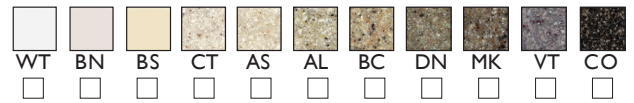
## NOTICE OF LIMITATION

Unit must be properly leveled to insure maximum drainage

## NOTE

Specification sheet depicts product available after Sept 1, 2012. For product specifications prior to that date, contact customer service for accurate spec sheets.

## FINISH COLOR SELECTION (Check One)



**SOLID SURFACE:** WT-white, BN-bone, BS-biscuit, CT-cotton seed, AS-ashley, AL-almond, BC-beach, DN-dune, MK-mink, VT-violet, CO-coco

**GELCOAT:** WT-white, BN-bone, BS-biscuit

## ACCESSIBLE PACKAGES (Check One)

Includes standard features plus Tri-Cell honeycomb wall construction, Pre-leveled EasyBase™, and all accessories detailed below.

### ☐ SOLID SURFACE COMFORT PACKAGE

SSS4248BF-1 \$4,508

stainless steel L-bar configuration, woodgrain phenolic  
fold-up seat, stainless steel curtain rod

### ☐ GELCOAT COMFORT PACKAGE

XSS4248BF-1 \$3,543

white L-bar configuration, white HDPE fold-  
up seat, white curtain rod

## BUILD TO ORDER BASE MODELS (Check One)

Standard features only. All additional options must be selected from modify package options list.

### ☐ SOLID SURFACE BASE MODEL

SSS4248BF \$1,884

### ☐ GELCOAT BASE MODEL

XSS4248BF \$685

## MODIFY PACKAGE OPTIONS

After selecting base model or prepackaged model, select modify package options to add or change options. Add nomenclature in bold to prepackaged model number. Example: MODEL#-I-PB for pressure balancing mixing valve option.

### WALL REINFORCEMENT

☐ **TC** Tri-Cell honeycomb \$229

☐ **FWB** Full wood backing \$284

☐ **FBP** Future placement for bars/seats \$115

### L-BAR CONFIGURATION

☐ **LW** ComfortCare™ 1.25 white \$400

☐ **CLS** ComfortCare™ 1.25 stainless \$309

☐ **LS** Stainless 1.50 \$307

### VERTICAL GRAB BAR

☐ **VW** ComfortCare™ 24" white \$174

☐ **CVS** ComfortCare™ 24" steel \$149

☐ **VS** Stainless 24" X 1.50 \$131

### L SHAPED FOLD-UP SEAT

☐ **PD** Padded white \$590

☐ **HD** HDPE white \$602

☐ **PH** Phenolic woodgrain \$602

### CURTAIN ROD

☐ **CRW** Curtain rod/cups white \$166

☐ **CRS** Curtain rod/cups stainless steel \$87

### CURTAIN

☐ **CPW** Polyester weighted white \$225

☐ **CVW** Vinyl weighted white \$130

### VALVE & SHOWER ASSEMBLY

☐ **PB** Pressure balancing  
mixing valve \$275 (ADA/ANSI)

☐ **HH** Hand held shower assembly with slide bar;  
vacuum breaker and 60" hose \$367 (ADA/ANSI)

### WATER DAM

☐ **CD** Collapsible dam white \$85

### BASE REINFORCEMENT

☐ **EZB** Pre-leveled EasyBase™ \$269

### THRESHOLD

☐ **BF75** 3/4" barrier free \$111

☐ **BF2** 2" barrier free No Charge

### DRAIN

☐ **DR** Drain no caulk brass \$33

☐ **SEMI** Semi-permanent dam \$187

### P3

\*not available on solid surface models

### ANTIMICROBIAL

☐ **SS** SmartSilver \$500

### TRIM

☐ **TK** Trim Kit \$247

**cd**  
comfortdesigns

comfortdesignsbathware.com | 800.443.7269

ACCESSIBLE  
Enhancing Livable Design