

PRESSURE FITTINGS

Elbow

CELLO PRODUCTS INC

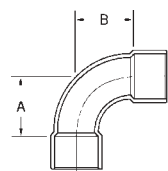


1-800-265-7882

90° ELBOW - (LONG TURN)

Copper x Copper

Wrot WP7LT-



C x C

Mueller: WE-500L wrot
-- cast
Elkhart: 107-L wrot
-- cast
Nibco: 607LT wrot
-- cast

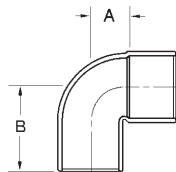
Item No.	Nom. Size (in inches)	Box Qty	Mstr Crtn	Net Wt. Approx.	Dim A	Dim B
WP7LT-02	1/8	50	1000	.01	1/2	1/2
WP7LT-04	1/4	50	1000	.02	3/4	3/4
WP7LT-05	5/16 OD	50	--	.01	--	--
WP7LT-06	3/8	50	500	.04	3/4	3/4
WP7LT-08	1/2	50	500	.06	7/8	7/8
WP7LT-10	5/8	25	250	.08	1-1/8	1-1/8
WP7LT-12	3/4	25	250	.12	1-3/16	1-3/16
WP7LT-16	1	10	100	.28	1-1/2	1-1/2
WP7LT-20	1-1/4	10	80	.34	1-7/8	1-7/8
WP7LT-24	1-1/2	10	80	.58	2-3/16	2-3/16
WP7LT-32	2	5	30	1.21	3	3
WP7LT-40	2-1/2	1	10	1.97	3-3/4	3-3/4
WP7LT-48	3	1	8	3.25	4-5/8	4-5/8
WP7LT-56	3-1/2	1	1	5.57	4-29/32	4-29/32
WP7LT-64	4	1	1	7.07	5-7/8	5-7/8
WP7LT-06-04	3/8 X 1/4	50	1000	.03	41/64	39/64
WP7LT-08-06	1/2 X 3/8	50	500	.06	3/4	11/16
WP7LT-10-08	5/8 X 1/2	25	250	.08	31/32	7/8
WP7LT-12-08	3/4 X 1/2	50	500	.10	7/8	7/8
WP7LT-16-08	1 X 1/2	25	250	.14	1-1/8	7/8
WP7LT-16-12	1 X 3/4	25	250	.17	1-1/4	1-9/64
WP7LT-20-08	1 1/4 X 1/2	10	100	.35	1-15/32	1-13/32
WP7LT-20-12	1 1/4 X 3/4	10	100	.35	1-5/16	1-3/16
WP7LT-20-16	1 1/4 X 1	10	100	.32	1-5/8	1-15/32
WP7LT-24-16	1 1/2 X 1	5	50	.35	1-37/64	1-13/32
WP7LT-24-20	1 1/2 X 1 1/4	5	50	.48	1-59/64	1-7/8
WP7LT-32-20	2 X 1 1/4	2	20	.94	2-1/2	2-1/8

90° ELBOW - STREET (Short Radius)

Fitting x Copper

Wrot

WP7-2-



FTG x C

Mueller: WE-503 wrot
-- cast
Elkhart: 107-C-2 wrot
-- cast
Nibco: 607-2 wrot
707-2 cast

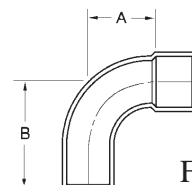
Item No.	Nom. Size (in inches)	Box Qty	Mstr Crtn	Net Wt. Approx.	Dim A	Dim B
WP7-2-02	1/8	50	200	.02	1/4	5/8
WP7-2-04	1/4	50	200	.02	3/8	3/4
WP7-2-06	3/8	50	200	.03	21/64	49/64
WP7-2-08	1/2	50	200	.06	7/16	1
WP7-2-10	5/8	25	250	.06	17/32	1-7/32
WP7-2-12	3/4	50	500	.12	5/8	1-5/8
WP7-2-16	1	10	250	.16	21/32	1-21/32
WP7-2-20	1-1/4	10	100	.26	15/16	2-7/32
WP7-2-24	1-1/2	20	50	.38	1-1/8	2-19/32
WP7-2-32	2	10	25	1.19	1-1/8	3-3/16
WP7-2-40	2-1/2	5	25	1.90	1-1/2	3-1/2
WP7-2-48	3	3	24	1.99	2	3-25/32
WP7-2-64	4	1	8	4.26	2-19/32	4-13/16

90° ELBOW - STREET (Long Turn)

Fitting x Copper

Wrot

WP7LT-2-



FTG x C

Mueller: WE-503L wrot
-- cast
Elkhart: 107-L-2 wrot
-- cast
Nibco: 607-2-LT wrot
-- cast

Item No.	Nom. Size (in inches)	Box Qty	Mstr Crtn	Net Wt. Approx.	Dim A	Dim B
WP7LT-2-02	1/8	50	1000	.01	1/2	7/8
WP7LT-2-04	1/4	50	1000	.02	3/4	1-1/8
WP7LT-2-06	3/8	50	1000	.03	3/4	1-3/16
WP7LT-2-08	1/2	50	500	.06	7/8	1-7/16
WP7LT-2-10	5/8	25	250	.08	1-1/8	1-13/16
WP7LT-2-12	3/4	25	250	.13	1-5/32	2
WP7LT-2-16	1	10	250	.27	1-3/8	2-3/8
WP7LT-2-20	1-1/4	10	80	.38	1-7/8	2-29/32
WP7LT-2-24	1-1/2	10	80	.58	2-3/16	3-5/16
WP7LT-2-32	2	5	30	1.19	2-31/32	4-3/8
WP7LT-2-40	2-1/2	1	10	1.90	3-3/4	5-9/32
WP7LT-2-48	3	1	8	3.31	4-5/8	6-11/32
WP7LT-2-56	3-1/2	1	1	--	4	5-31/32
WP7LT-2-64	4	1	1	--	4-29/64	6-23/32

CELLO PRODUCTS, INC * PHONE: (519) 621-9150 * FAX: (519) 621-4108

Cello Products was founded in 1946 in Cambridge, Ontario as a manufacturer of cast brass solder fittings. Wrought copper solder fittings were added to the product line in the 1960's; today, Cello is 100% Canadian owned and produces an extensive line of wrought copper and cast brass solder fittings, in sizes ranging from 1/8" to 8". Cello manufactures five general types of solder fittings: Wrought Copper Pressure, Cast Brass Pressure, Wrought Copper Drainage, Cast Brass Drainage, and Cast Brass Flanges. Cast brass solder fittings are made for both soft solder joining systems and silver braze joining systems. Cello also manufactures a portion of its cast threaded brass product line and does custom casting for special order fittings not shown in this catalogue.

Our products are used in plumbing, heating and related mechanical applications. Cello produces fittings ranging in use from underground water and gas services to water distribution and air conditioning systems as well as drainage, waste and vent piping for use in residential, commercial, industrial and institutional applications.

Cello is the only full-line copper solder fittings manufacturer in Canada and is also one of only two full-line solder fittings manufacturers in North America.

Cello Products' fittings are made from the highest quality raw materials available. Modern production techniques are used to ensure consistency and quality in our fittings. Cello employs fully automatic computer numeric controlled (CNC) lathes in its operations, and a large quantity of finishing machines are controlled with programmable logic controllers. Certain pieces of equipment have been commissioned with state-of-the-art computer controlled multi-axis positional controllers. Qualified personnel inspect and test our products to ensure that only the finest quality products are shipped to our customers. Cello's care in the design and production of all our products is exemplified in both our cast brass and wrought copper fittings. Cello fittings are produced to meet requirements of all applicable standards wherever practicable. Our facility is ISO 9002 certified, and we are currently working toward ISO-9001:2000 certification which will be achieved December 2003. All pressure fittings manufactured by Cello Products have CRNs (Canadian Registration Numbers) in accordance with CSA B51-95 Boiler, Pressure Vessel and Pressure Piping Code.

All manufacturing is done in a 85,000 sq. ft. building located in Cambridge, Ontario which is ideally situated to serve the Canadian and United States' markets. Cello's products are shipped to our customers in North America from six warehouse locations to better serve our customers.

Product Specification:

Cello Products Inc. certifies that it manufactures all its cast brass and wrought copper solder joint fittings to the general specifications outlined in the following industry standards:

<i>Wrought Copper and Copper Alloy Solder Joint Pressure Fittings:</i>	ASME/ANSI Std. B16.22 - 2001
<i>Cast Copper Alloy Solder Joint Pressure Fittings:</i>	ASME/ANSI Std. B16.18 - 2001
<i>Wrought Copper and Wrought Copper Alloy Solder Joint Drainage Fittings -- DWV</i>	ASME/ANSI Std. B16.29 - 2001
<i>Cast Copper Alloy Solder Joint Drainage Fittings:</i>	ASME/ANSI Std. B16.23 - 2002
<i>Bronze Pipe Flanges and Flanged Fittings:</i>	ASME/ANSI Std. B16.24 - 2001
<i>Cast Bronze Threaded Fittings:</i>	ASME/ANSI Std. B16.15 - 1985
<i>Wrought Copper and Copper Alloy Braze - Joint Pressure Fitting</i>	ASME/ANSI Std. B16.50 - 2001
<i>Cast Copper Alloy Pipe Flanges and Flanged Fittings</i>	ASME/ANSI Std. B16.24 - 2001
<i>Wrought Copper LW Solder Joint Pressure Fittings:</i>	MSS SP-104 - 1990
<i>Cast Copper Alloy Flanges and Flanged Fittings Class 125, 150, 300:</i>	MSS SP-106 - 1990

Cello further certifies that the materials used to manufacture these fittings are made in compliance with the following industry standards:

Tubular Wrought Copper:

Standard Specification for Seamless Copper Tube: ASTM B75 Alloy C12200

Products Made From Sheet:

*Standard Specification for Copper Sheet, Strip, Plate
and Rolled Bar:* ASTM B152 Alloy C11000

Cast Products:

*Standard Specification for Copper Alloy Sand Castings for General
Applications; Federal Specification WW-U-516 for Type III,
Class A and B Copper Alloy Unions:* ASTM B584 Alloy C84400

The industry standards are: ANSI (American National Standards Institute); ASME (The American Society of Mechanical Engineers); MSS (Manufacturers Standardization Society of the Valve and Fittings Industry Inc.); ASTM (American Society for Testing and Materials).

All Cello Products Inc. wrought copper fittings are NSF 61 registered.

All pressure fittings manufactured by Cello Products Inc. have Canadian Registration Numbers (CRN)

0A4925.5C Pressure pipe fittings

0B4925.5C Flanges

(note - the 5 is needed to designate the first province of registration)

International Quality Standard: Cello Products is certified to ISO 9002 standards through QMI (Quality Management Institute) and will be certified to ISO 9001:2000, by 2004.